

THE

# Medical devices industry

IN THE CENTRE-LOIRE VALLEY REGION

3,164 jobs

63 companies

EUR 182 million  
in export turnover



## THE MAIN EMPLOYERS

COMPANY NAME	COUNTRY	ACTIVITY	DPT	WORKFORCE
<b>B. BRAUN MEDICAL</b>	DE	Medical devices in urology (catheters, probes and pouches)	28	500
<b>FENWAL France</b>	DE	Blood transfusion bags	36	479
<b>MAQUET</b>	SUE	Operating tables, operating theatre equipment, lighting	45	307
<b>INVACARE FRANCE OPERATIONS</b>	US	Home-support equipment for disabled people, wheelchairs	37	298
<b>FFDM PNEUMAT</b>	FR	Dental instruments, drills, root canal instruments	18	150
<b>VERMON</b>	FR	Ultrasound sensors and probes for medical imaging	37	150
<b>NYPRO FRANCE</b>	US	Medical devices by plastic injection: insulin delivery pens, eye dropper bottles	28	115
<b>SFERIC STELLITE</b>	FR	Hip joint prostheses by high speed machining	41	93
<b>CORONA MEDICAL PARAMOUNT BED</b>	JP	Beds for hospitals, retirement homes and home hospitalisation	37	80
<b>MEDIPREMA</b>	FR	Medical equipment for newborns (incubators)	37	65

Source : Centréco/Directe Centre

## COMPANIES WITH FOREIGN CAPITAL EMPLOY 60% OF EMPLOYEES IN THE SECTOR

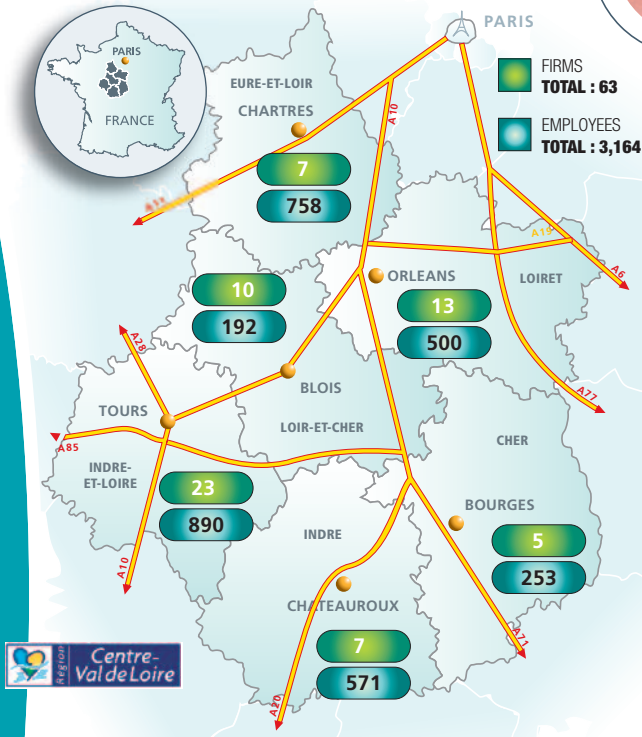
	WHOLE INDUSTRY	FOREIGN CAPITAL	SECTOR PÉNÉTRATION RATE*
<b>NUMBER OF COMPANIES</b>	63	8	12,7 %
<b>NUMBER OF EMPLOYEES</b>	3 164	1 871	59,1 %

\* Penetration rate\*: proportion of jobs in the sector in foreign capital companies / jobs in the sector

Source : Centréco - 2014

## More than one job in four in Indre-et-Loire

### IN THE CENTRE-LOIRE VALLEY REGION

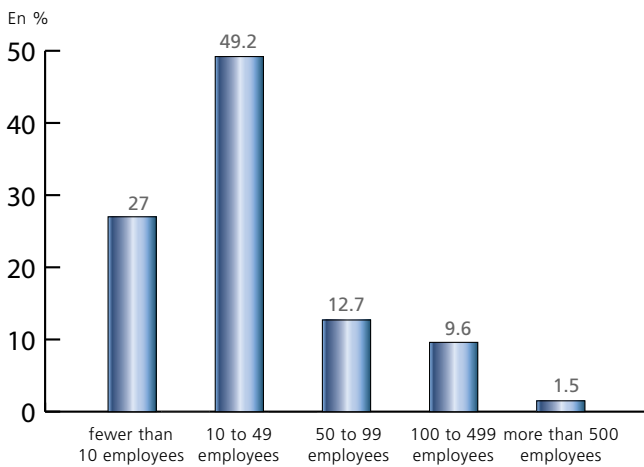


### Higher education

Engineering schools and universities provide a whole range of courses for the industrial and medical sectors in particular.

- **Polytech'Orléans** teaches an engineering degree, Electronic and Optical Ecotechnologies speciality. Graduates can go into R&D particularly in the medical imaging field.
- **Polytech'Tours** teaches an Electrical Energy and Systems Engineering degree, giving access to production and R&D engineering positions in companies and industrial concerns in the electronics and microelectronics sectors.
- **The University of Tours** teaches a Master in Medical Imaging Technology for professional purposes, training managers specialising in medical imaging devices.

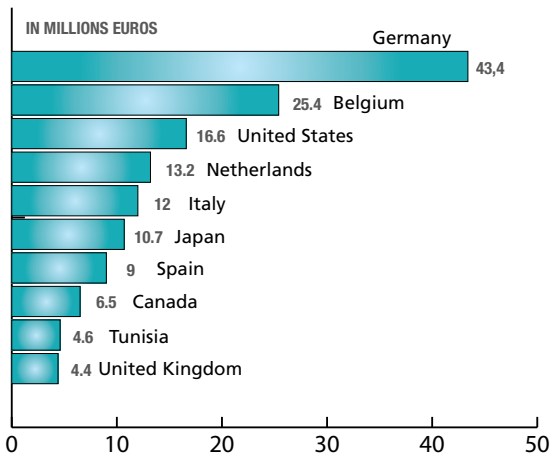
### Three-quarters of companies employ fewer than 50 employees, in %



### A strong capacity for innovation supported by clusters and technical centres

- The competitiveness cluster **S2E2** focuses on electrical energy technologies and smart grids in the service of energy management, looking particularly at the end of the energy chain: consumer use of equipment. The cluster's projects cover industrial equipment (motors, alternators, converters, speed variators, etc.), medical equipment, domestic electrical appliances and electronics for the general public.
- **The Prisme institute** (Multidisciplinary Laboratory for Research in Energy, Mechanical and Systems Engineering) is a laboratory hosted at the University of Orléans. Within the institute, the IRAuS cluster (Images, Robotics, Automation and Signals) develops research on systems engineering and information processing systems. The Image-Vision (IV) team is made up of a dozen professors specialising in digital image processing and computer vision. A large proportion of the team's work finds applications in the health or lifestyle and home care services sectors.

### Germany and Belgium are the number one customers of regional companies



Source : Directorate for Customs and Indirect Taxation of the Centre Region